

TIMBER SEPARATING WALLS



Timber double stud walls are commonly used as separating walls, providing fire safety and acoustic separation between dwellings.

This section only contains construction details for separating walls between dwellings. [FOR SYSTEMS AND INSTALLATION, REFER TO SECTION 4.1.2].

For an alternative separating wall system, use the innovative Lafarge **InterHOME** system [REFER TO SECTION 4.3.3].

[REFER TO SECTION 3.3 FOR MORE INFORMATION ON SEPARATING WALLS].



FIRE RATED

TIMBER SEPARATING WALL BASE AND SUSPENDED GROUND FLOOR - ELEVATION

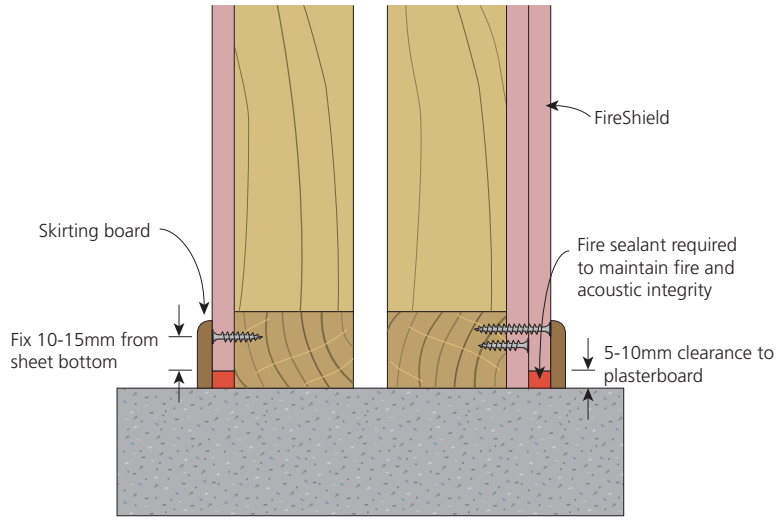


FIGURE 1
Separating wall base to slab

i Fill any gaps with fire sealant to maintain fire and acoustic integrity.

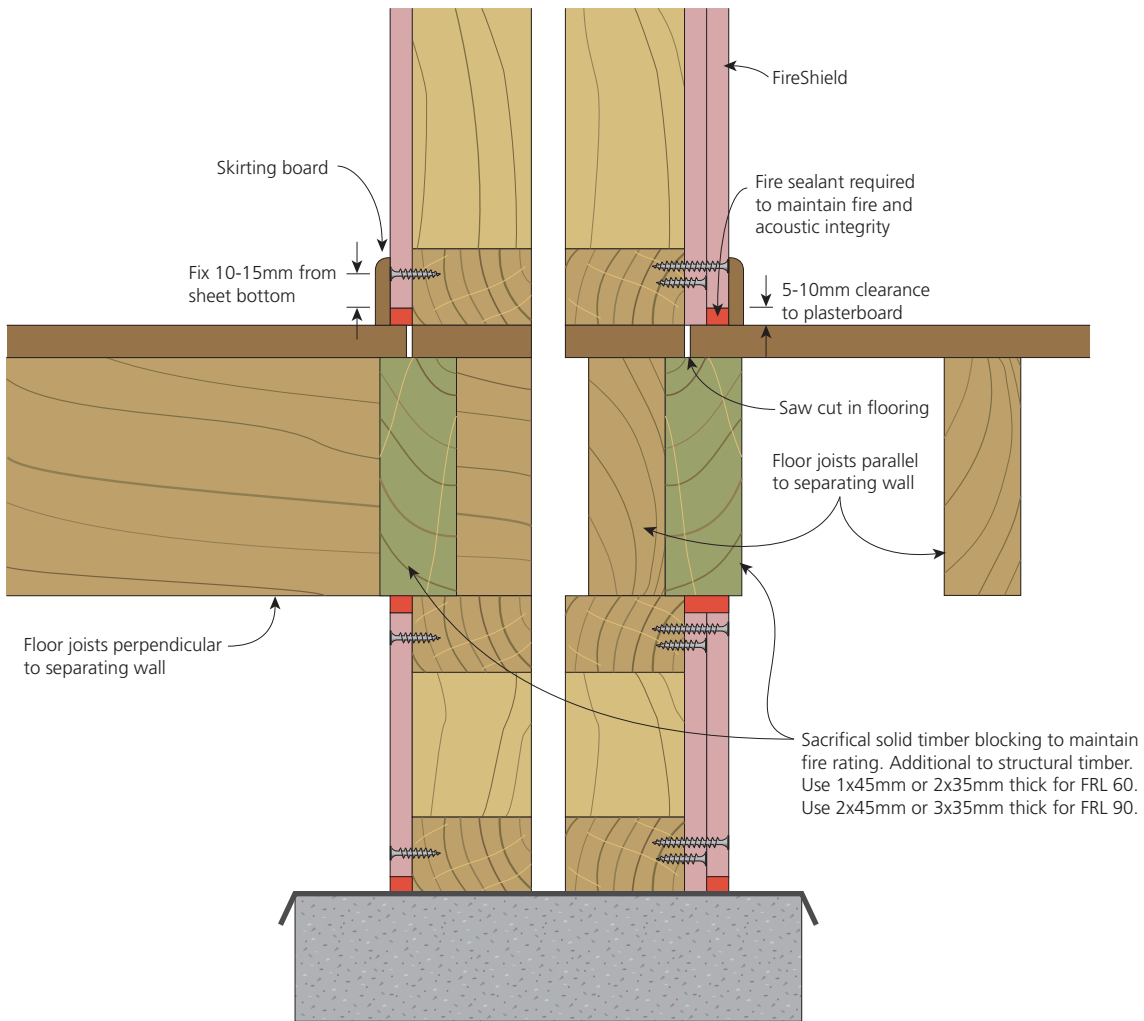


FIGURE 2
Separating wall with suspended ground floor



FIRE RATED

TIMBER SEPARATING WALL WITH UPPER STOREY FLOOR - ELEVATION

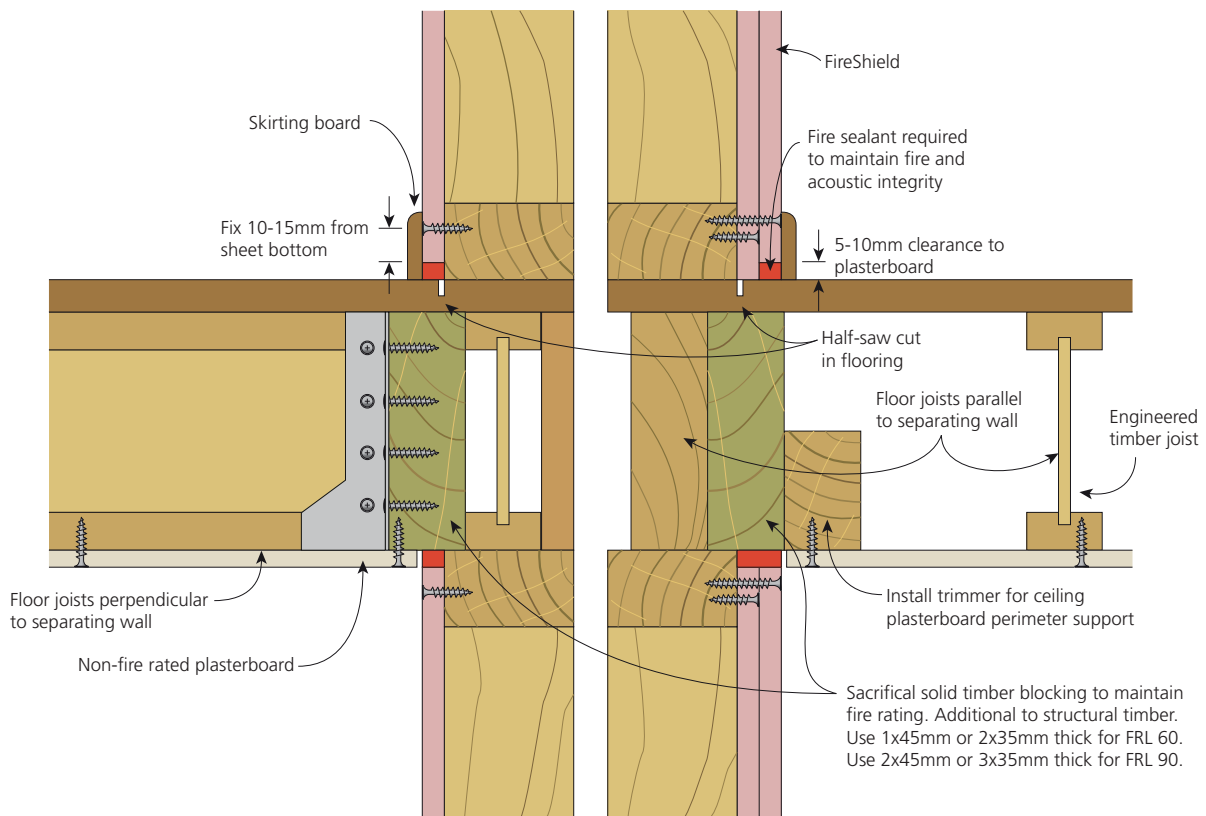


FIGURE 3
Separating wall with upper storey floor

i Fill any gaps with fire sealant to maintain fire and acoustic integrity.

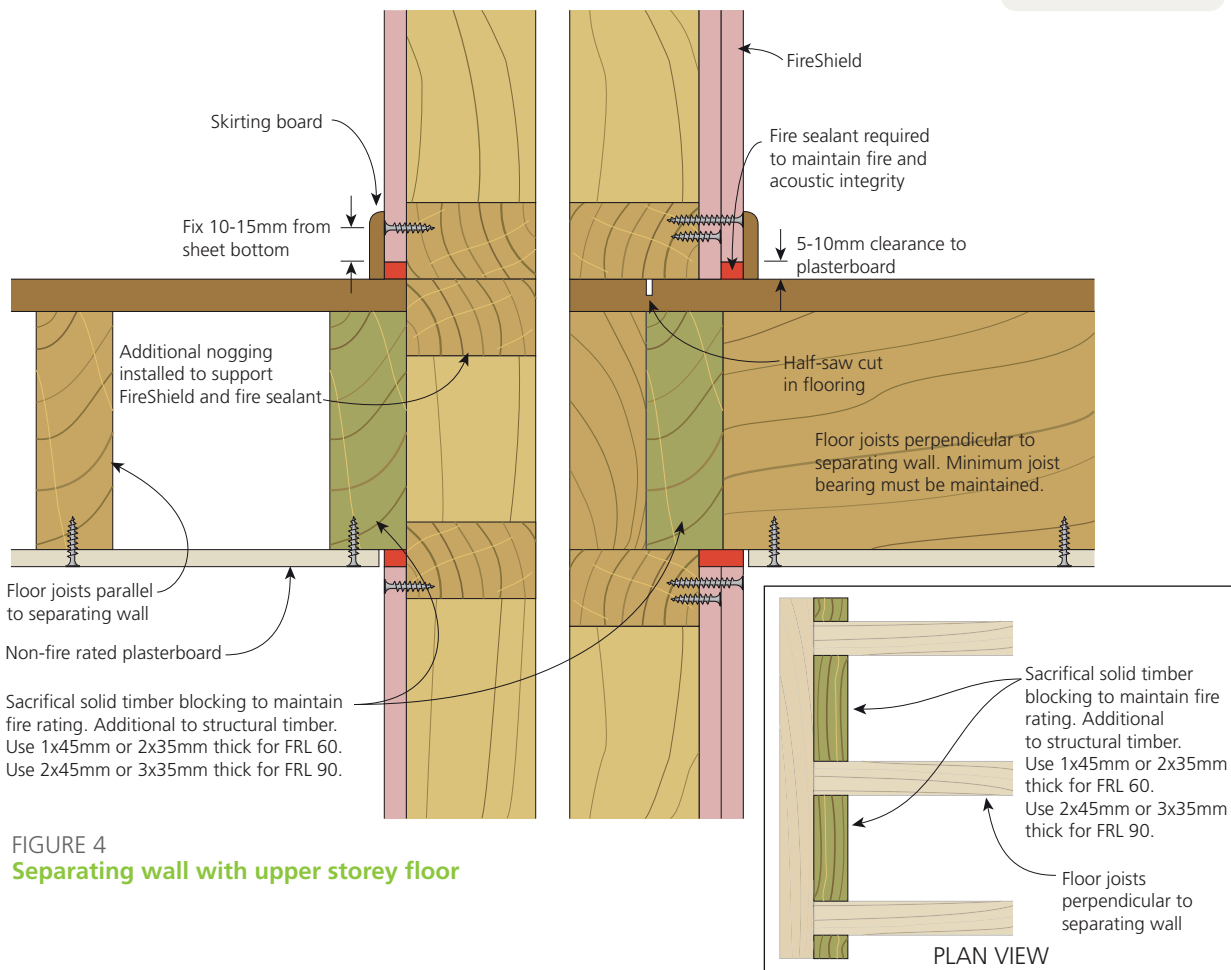


FIGURE 4
Separating wall with upper storey floor

FIRE RATED
TIMBER SEPARATING WALL ROOF DETAIL - ELEVATION

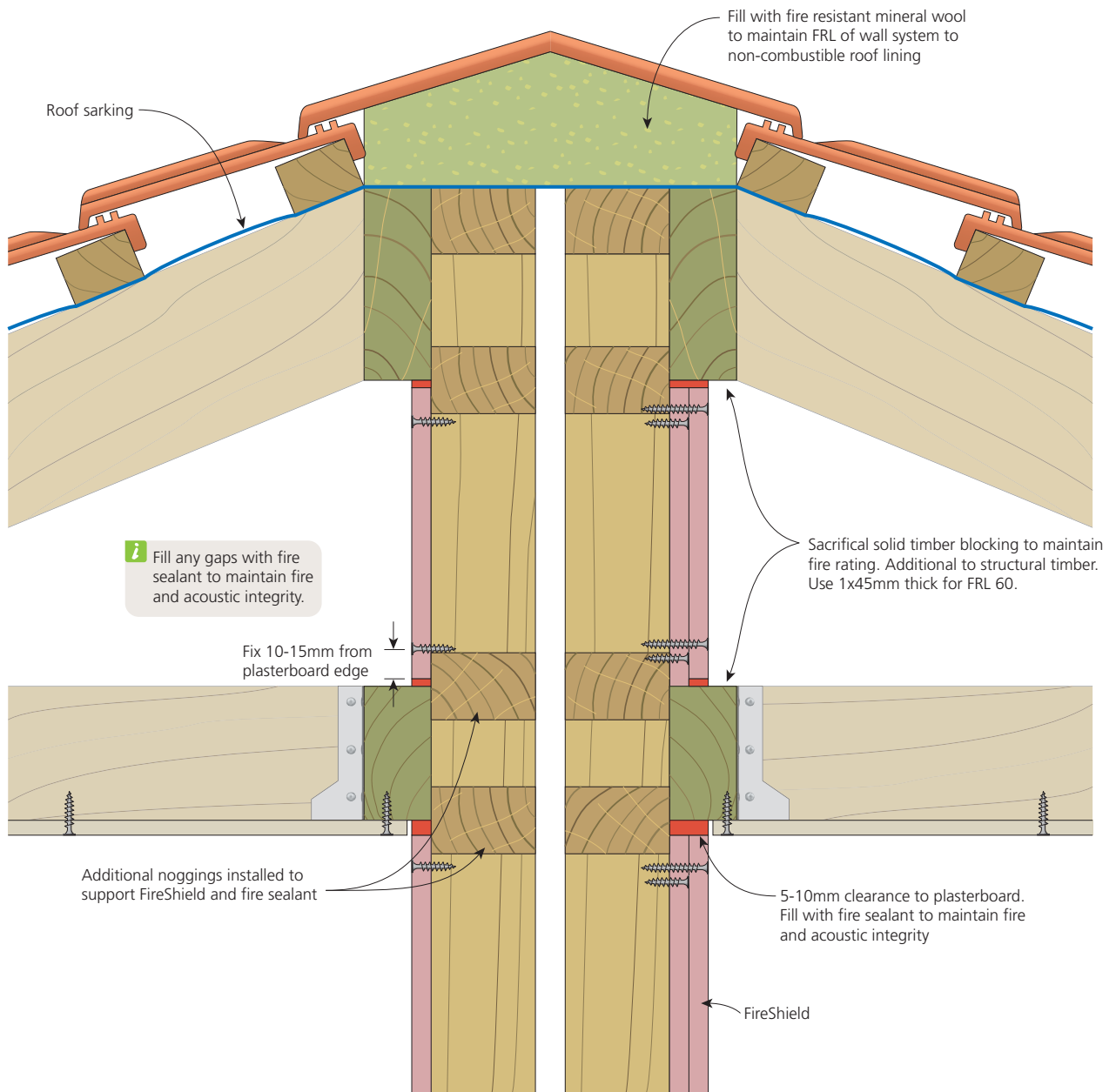


FIGURE 5
 Separating wall with perpendicular roof trusses

FIRE RATED
TIMBER SEPARATING WALL ROOF DETAIL - ELEVATION

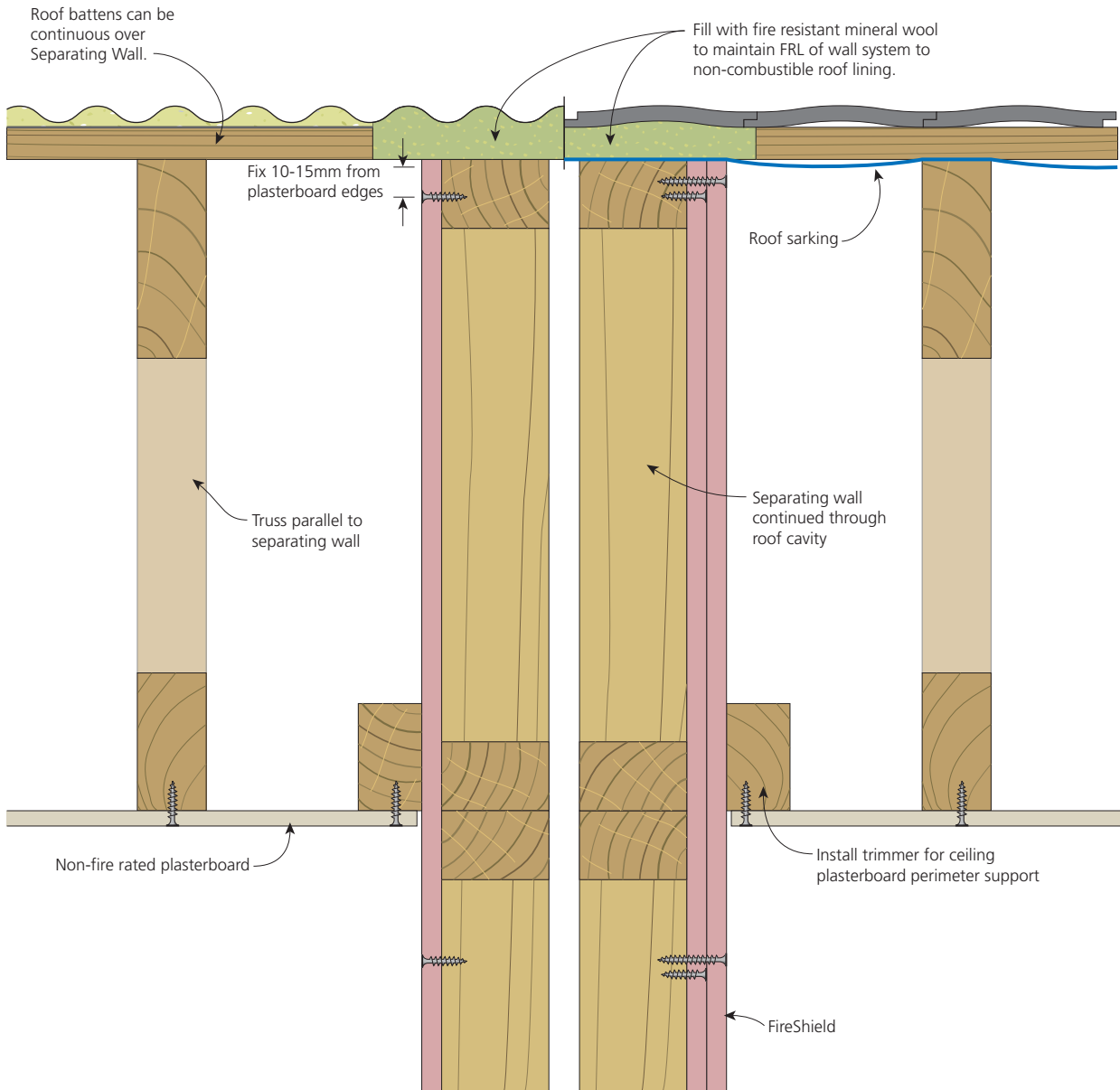


FIGURE 6
Separating wall with parallel roof trusses



FIRE RATED

TIMBER SEPARATING WALL ROOF DETAIL - ELEVATION

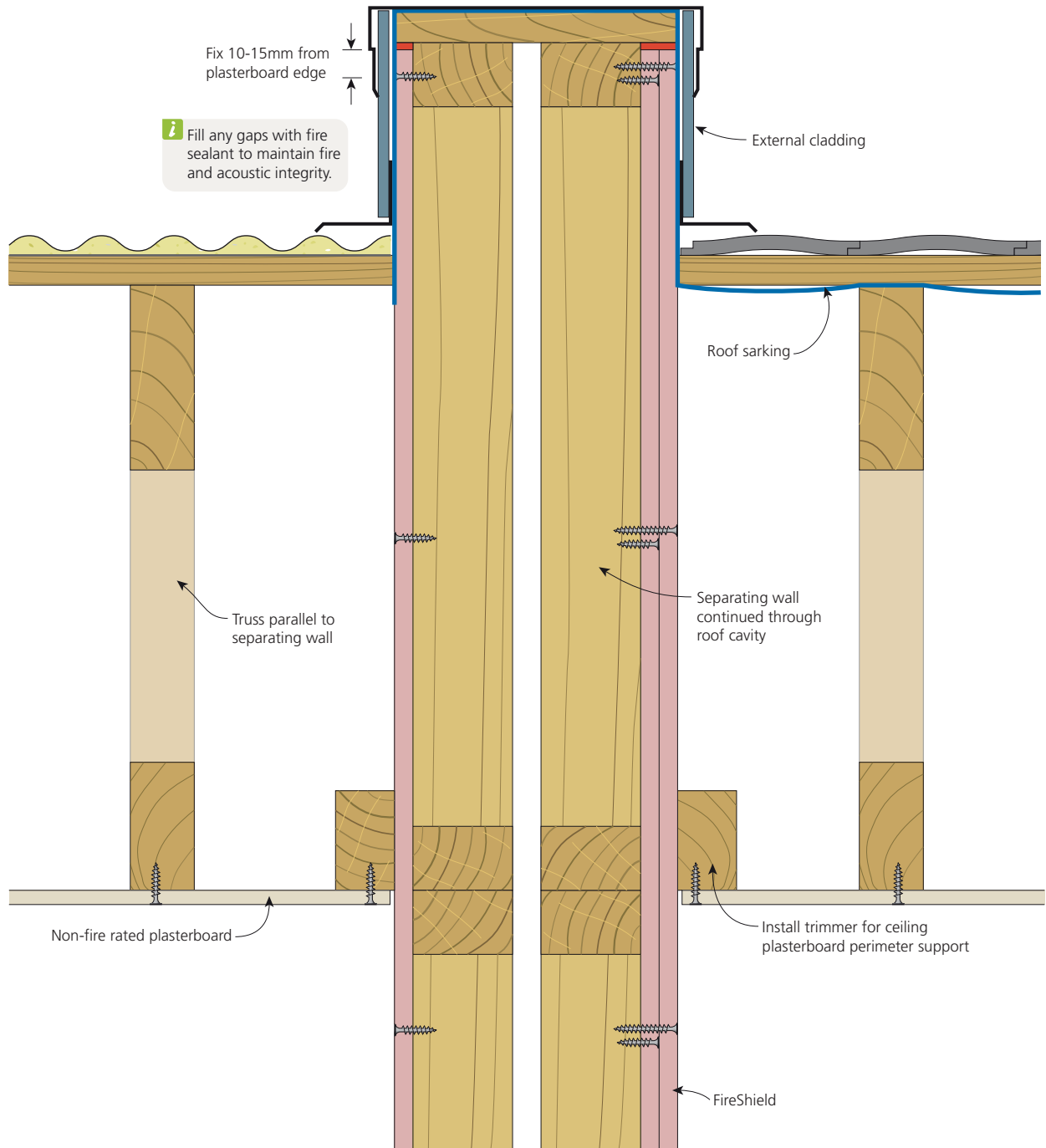


FIGURE 7
Separating wall to parapet roof with parallel roof trusses



FIRE RATED

TIMBER SEPARATING WALL ROOF DETAIL WITH EXTERNAL WALL - ELEVATION

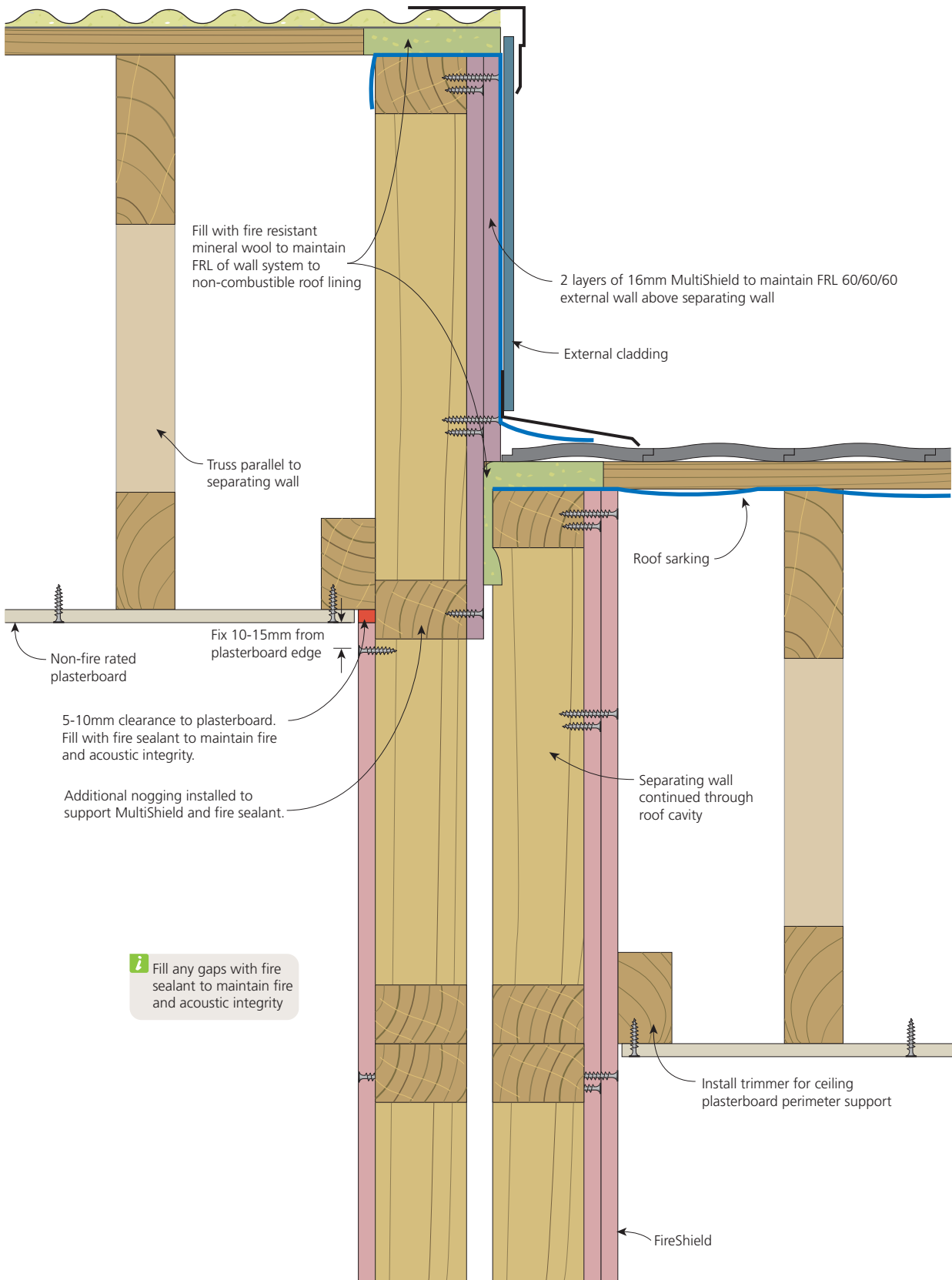


FIGURE 8
Separating wall with external wall above

FIRE RATED
TIMBER SEPARATING WALL ROOF DETAIL - ELEVATION

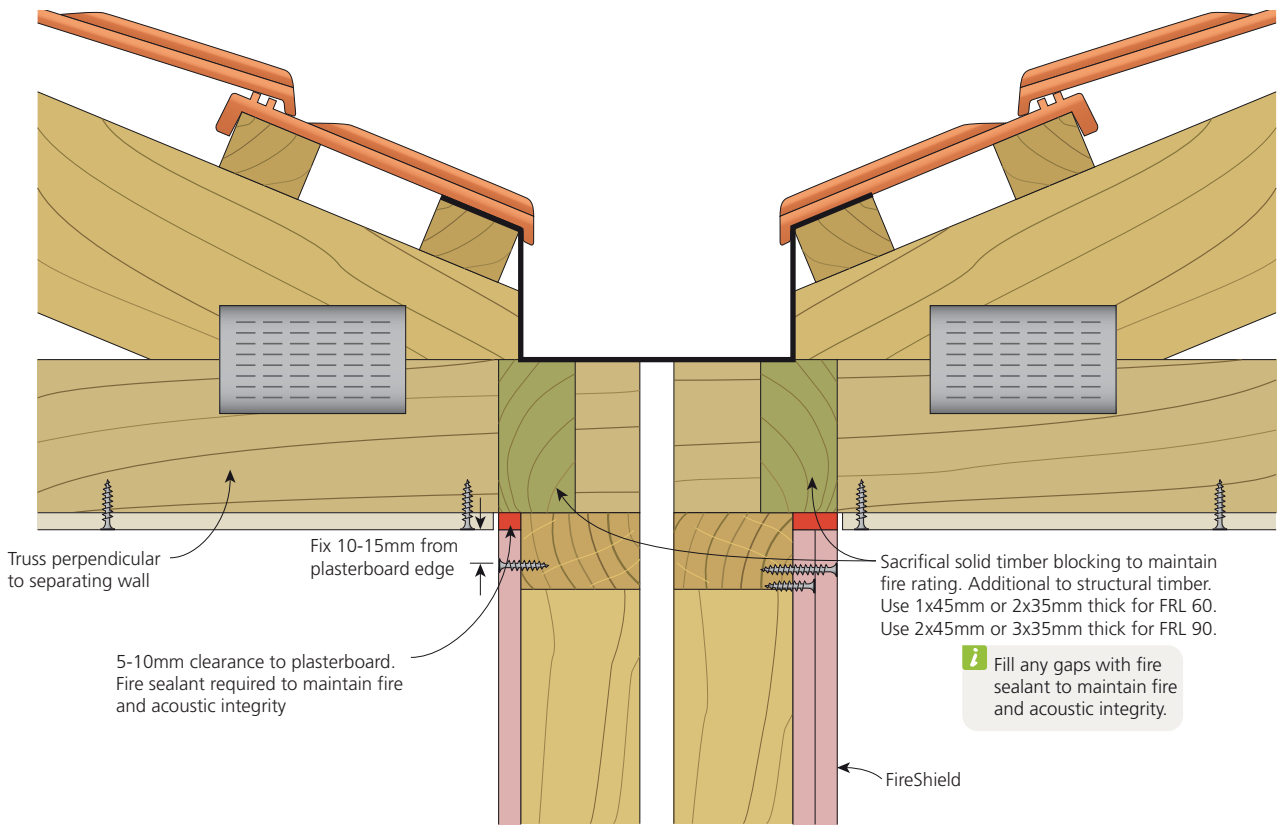
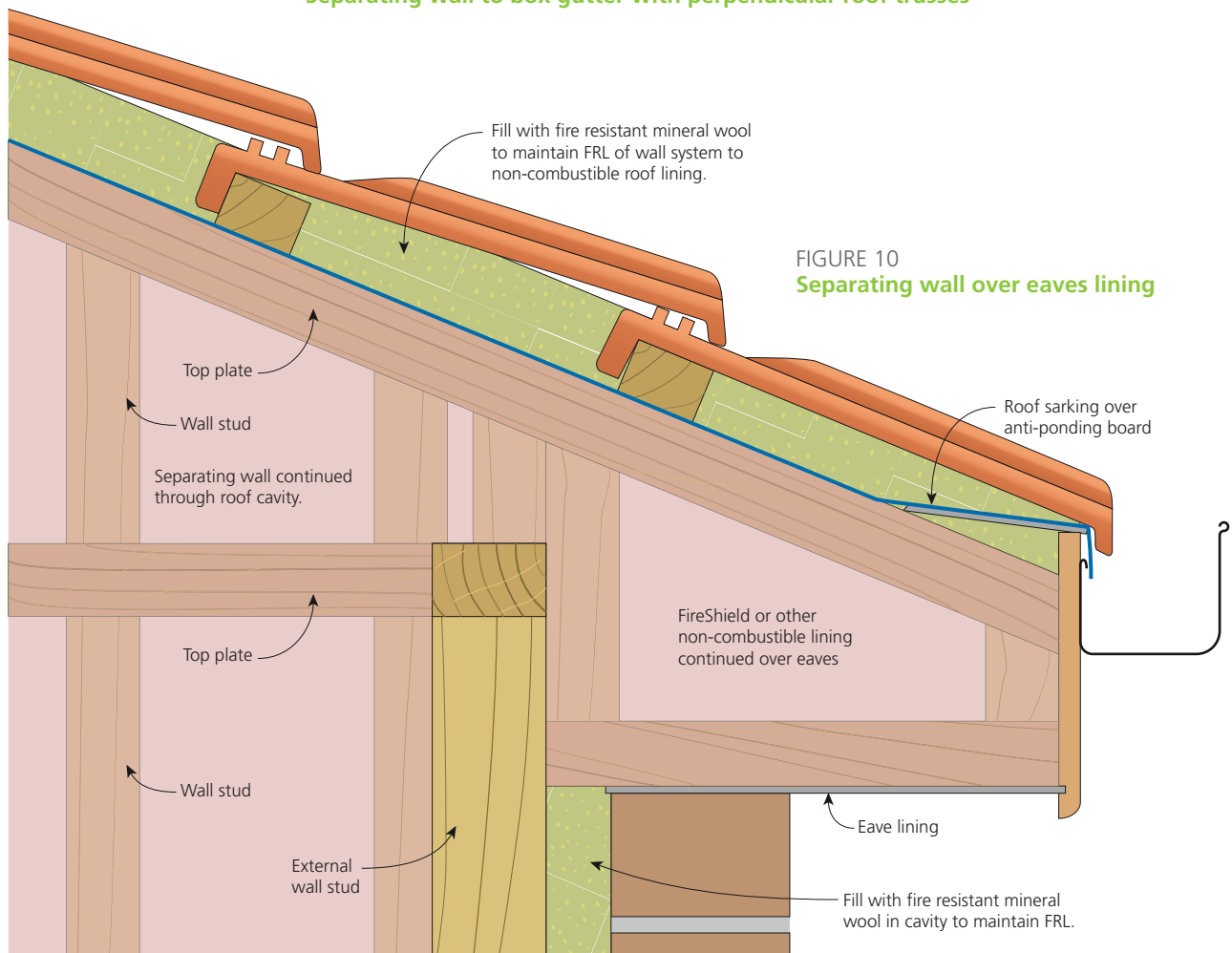


FIGURE 9
 Separating wall to box gutter with perpendicular roof trusses





FIRE RATED

TIMBER SEPARATING WALL TO EXTERNAL WALL - ELEVATION

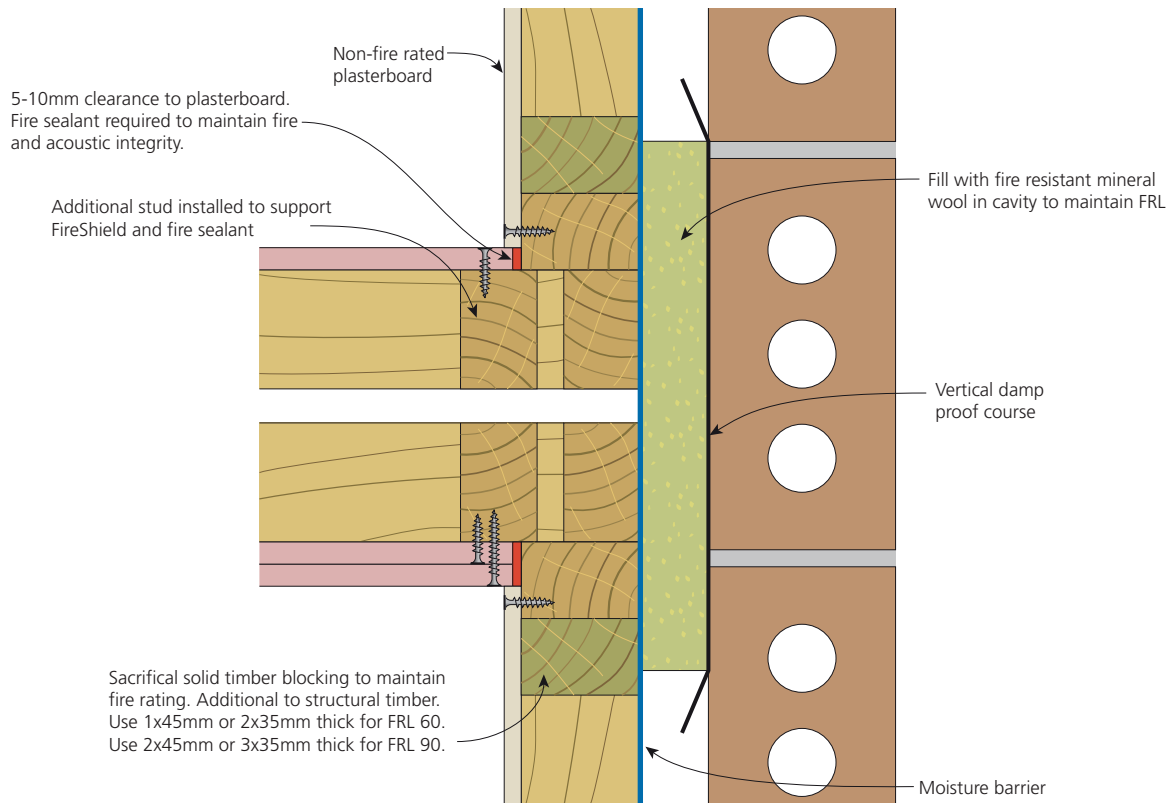


FIGURE 11
Separating wall to external brick wall

i Fill any gaps with fire sealant to maintain fire and acoustic integrity.

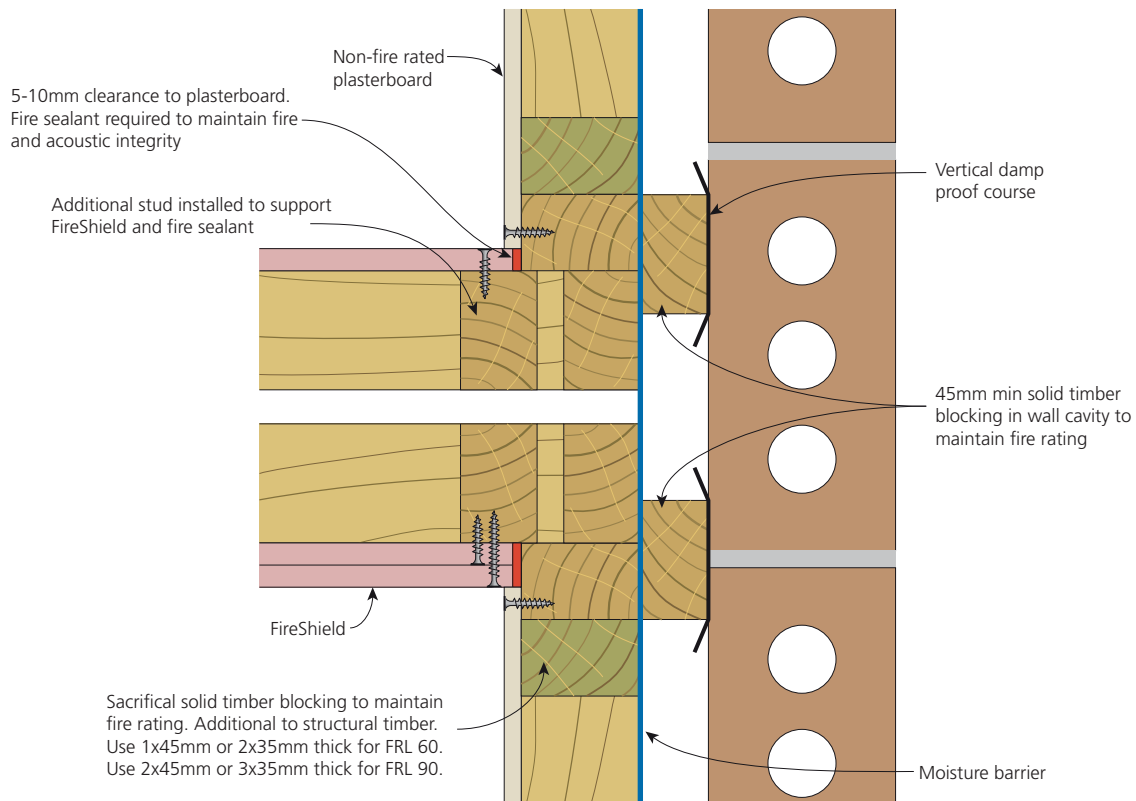


FIGURE 12
Separating wall to external brick wall



FIRE RATED

TIMBER SEPARATING WALL TO EXTERNAL WALL - ELEVATION

Sacrificial solid timber blocking to maintain fire rating. Additional to structural timber. Use 1x45mm or 2x35mm thick for FRL 60. Use 2x45mm or 3x35mm thick for FRL 90.

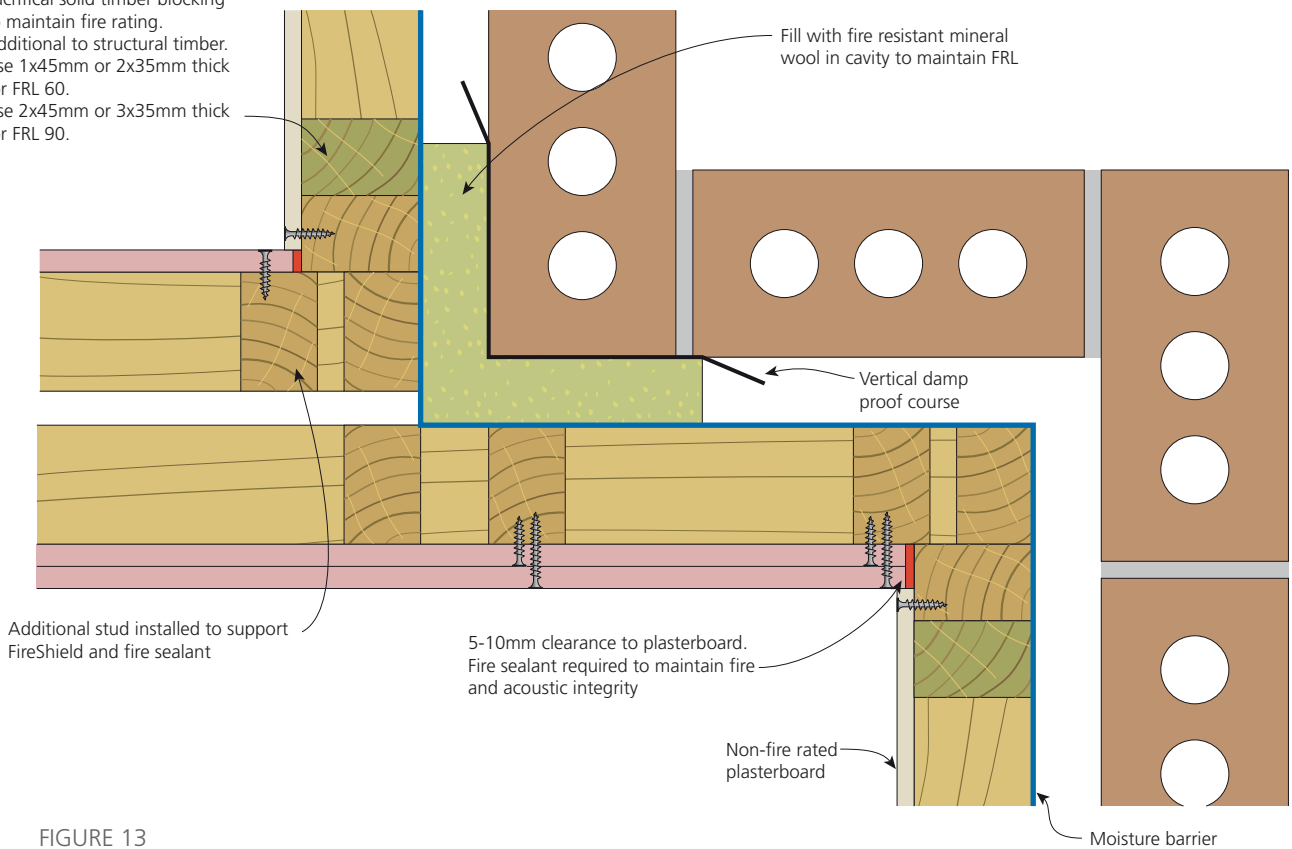


FIGURE 13
Separating wall to external brick wall with return

i Fill any gaps with fire sealant to maintain fire and acoustic integrity.

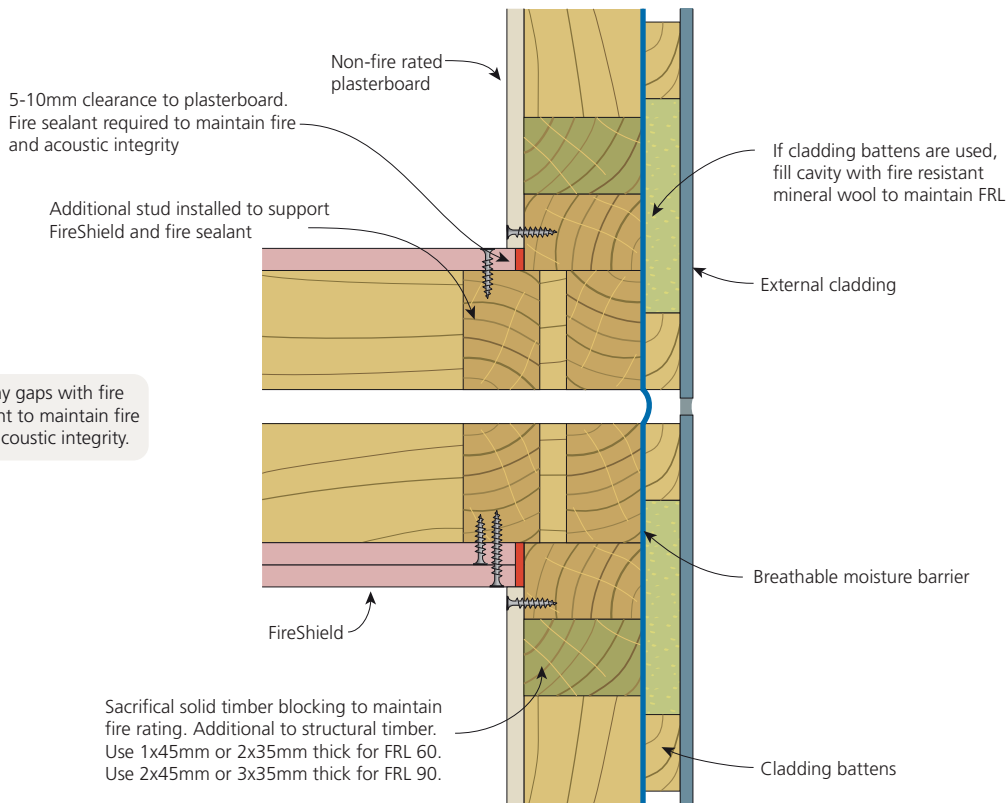


FIGURE 14
Separating wall to external clad wall