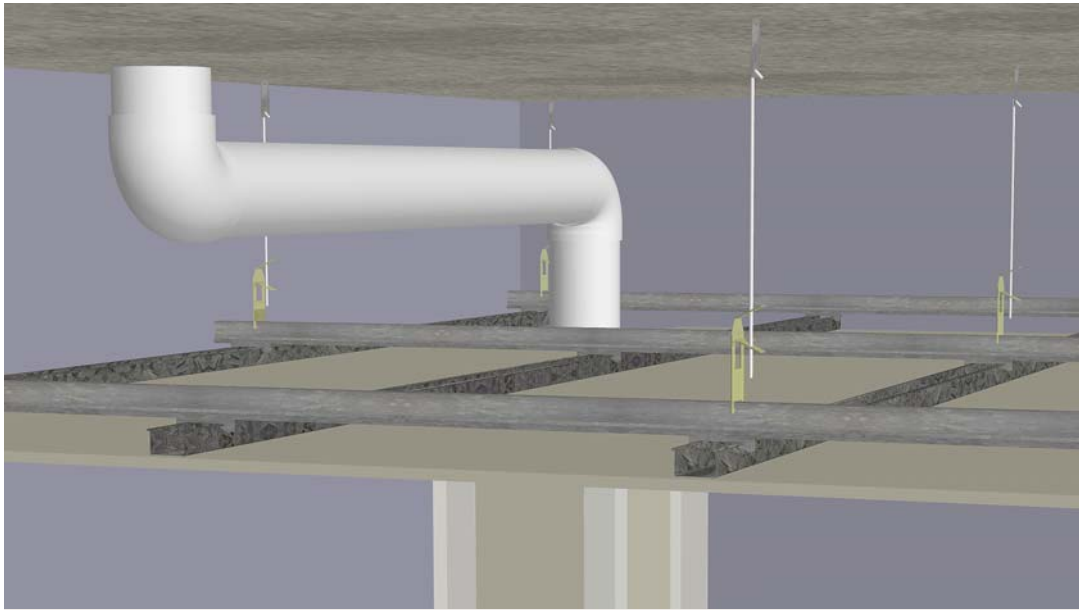


SOIL AND WASTE PIPE ACOUSTIC SYSTEMS

SYSTEMS

332



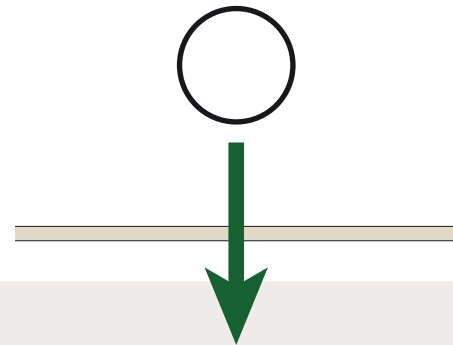
Soil and waste pipe systems provide sound insulation ratings for hydraulic services in a ceiling cavity, bulkhead or a duct. These systems have been designed to comply with BCA requirements for each state.

The soil and waste pipe systems cover a range of situations including bathroom ceilings, bedroom or habitable room ceilings, as well as ducts. Certain systems may require the pipes to be wrapped but alternative systems exist that include covering the pipes in plasterboard or the use of a false ceiling when wrapping is not practical.

This section includes only the system tables for soil and waste pipe acoustic systems. For installation requirements, refer to the relevant wall or ceiling section.

LSWP2-LSWP15

[Soil and waste pipe systems can be a ceiling, wall, bulkhead or duct]  
 [Number of downlights per 5 m<sup>2</sup> area]  
 [Downlights should be evenly distributed and no closer than 900mm apart]



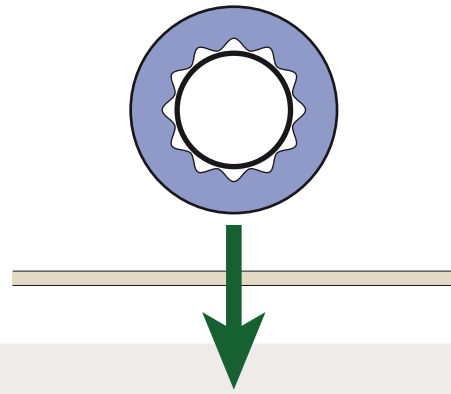
SYSTEM	PLASTERBOARD LINING	ACOUSTICS R <sub>w</sub> (R <sub>w</sub> + C <sub>tr</sub> )			
		No insulation	With either 50mm Glasswool or 65mm Polyester ISB3		
LSWP2	2 layers of 10mm <b>MastaShield</b>	32 (27)	28 (25) with 2 downlights	35 (30)	27 (26) with 4 downlights
LSWP3	1 layer of 13mm <b>MastaShield</b>	29 (25)	-	32 (28)	26 (25) with 3 downlights
LSWP5	1 layer of 10mm <b>SpanShield</b>	28 (24)	-	31 (27)	27 (25) with 2 downlights
LSWP6	2 layers of 10mm <b>SpanShield</b>	32 (28)	26 (25) with 3 downlights	35 (31)	27 (27) with 4 downlights
LSWP8	2 layers of 10mm <b>SoundShield</b>	33 (30)	25 (25) with 4 downlights	36 (33)	28 (28) with 4 downlights
LSWP9	1 layer of 13mm <b>SoundShield</b>	30 (27)	26 (25) with 2 downlights	33 (30)	25 (25) with 4 downlights
LSWP12	2 layers of 10mm <b>WaterShield</b>	32 (28)	26 (25) with 3 downlights	35 (31)	27 (27) with 4 downlights
LSWP13	1 layer of 13mm <b>WaterShield</b>	29 (26)	27 (25) with 1 downlight	32 (29)	26 (26) with 3 downlights
LSWP15	1 layer of 13mm <b>FireShield</b>	30 (26)	28 (25) with 1 downlight	33 (29)	25 (25) with 4 downlights

Day Design  
3094-22  
Note: Pipes must not be in contact with insulation or plasterboard

## LSWP21-LSWP34

PIPE WRAPPING: [OPTION1] CMG Latimer AFL/4-12 (4.5 kg/m<sup>2</sup>) or  
 [OPTION2] Pyrotek Soundlagg 4525C (5 kg/m<sup>2</sup>) or  
 [OPTION3] NuWave NuWrap5 (5 kg/m<sup>2</sup>)

[Soil and waste pipe systems can be a ceiling, wall, bulkhead or duct]  
 [Number of downlights per 5 m<sup>2</sup> area]  
 [Downlights should be evenly distributed and no closer than 900mm apart]



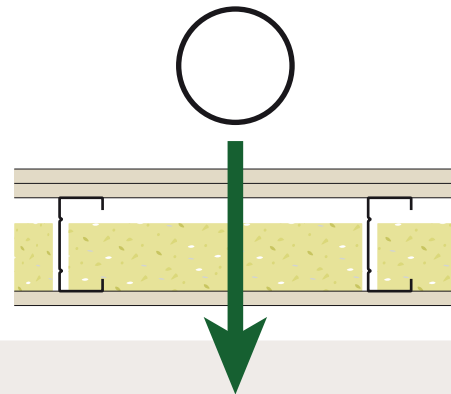
SYSTEM	PLASTERBOARD LINING	ACOUSTICS Rw (Rw + Ctr)		
		No insulation	With either 50mm Glasswool or 65mm Polyester ISB3	
LSWP21	2 layers of 10mm <b>MastaShield</b>	48 (38)	51 (41)	49 (40) with 1 downlight
LSWP24	1 layer of 10mm <b>SpanShield</b>	44 (35)	47 (38)	-
LSWP25	2 layers of 10mm <b>SpanShield</b>	48 (39)	51 (42)	47 (40) with 2 downlights
LSWP28	1 layer of 13mm <b>SoundShield</b>	46 (38)	49 (41)	47 (40) with 1 downlight
LSWP31	2 layers of 10mm <b>WaterShield</b>	48(39)	51 (42)	47 (40) with 2 downlights
LSWP32	1 layer of 13mm <b>WaterShield</b>	45 (37)	48 (40)	-
LSWP34	1 layer of 13mm <b>FireShield</b>	46 (37)	49 (40)	-
LSWP35	1 layer of 16mm <b>FireShield</b>	-	50 (41)	-

Day Design  
 3094-22  
 3094-38  
 Note: Pipes  
 must not be  
 in contact with  
 insulation or  
 plasterboard

## LSWP44-LSWP54

INNER LINING: 2 layers of 10mm **SpanShield** attached to a concealed frame  
 FRAME: 64mm steel stud minimum fixed to concealed frame

[Soil and waste pipe systems can be a ceiling, wall, bulkhead or duct]  
 [Number of downlights per 5 m<sup>2</sup> area]  
 [Downlights should be evenly distributed and no closer than 900mm apart]



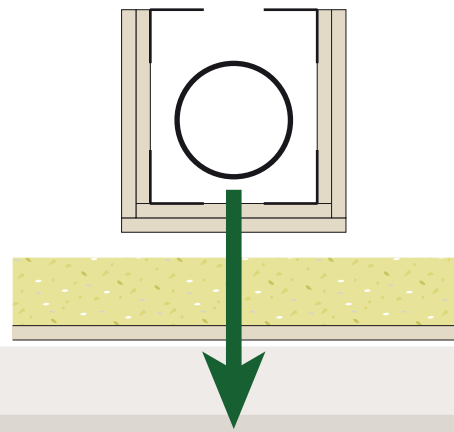
SYSTEM	OUTER PLASTERBOARD LINING	ACOUSTICS Rw (Rw + Ctr)		
		No insulation	With either 50mm Glasswool or 65mm Polyester ISB3	
LSWP44	1 layer of 10mm <b>SpanShield</b>	37 (29)	29 (25) with 4 downlights	45 (35)
LSWP45	2 layers of 10mm <b>SpanShield</b>	40 (32)	32 (28) with 4 downlights	49 (39)
LSWP46	1 layer of 10mm <b>SoundShield</b>	37 (29)	29 (25) with 4 downlights	46 (36)
LSWP48	1 layer of 13mm <b>SoundShield</b>	39 (31)	31 (27) with 4 downlights	47 (37)
LSWP50	1 layer of 10mm <b>WaterShield</b>	38(29)	30 (25) with 4 downlights	45 (35)
LSWP51	2 layers of 10mm <b>WaterShield</b>	40 (32)	32 (28) with 4 downlights	49 (39)
LSWP54	1 layer of 13mm <b>FireShield</b>	38 (30)	30 (26) with 4 downlights	46 (36)

Day Design  
 3094-22  
 3094-38  
 Note: Pipes  
 must not be  
 in contact with  
 insulation or  
 plasterboard

### LSWP64-LSWP74

PLASTERBOARD BOX ENCASING PIPE: 2 layers of any 13mm plasterboard

[Soil and waste pipe systems can be a ceiling, wall, bulkhead or duct with not less than 75mm gap between inner and outer plasterboard layers]



SYSTEM	PLASTERBOARD LINING	ACOUSTICS Rw (Rw + Ctr)	
		No insulation	With either 50mm Glasswool or 65mm Polyester ISB3
LSWP64	1 layer of 10mm <b>SpanShield</b>	-	45 (34)
LSWP65	2 layers of 10mm <b>SpanShield</b>	-	51 (39)
LSWP68	1 layer of 13mm <b>SoundShield</b>	-	50 (38)
LSWP70	1 layer of 10mm <b>WaterShield</b>	-	45 (34)
LSWP72	1 layer of 13mm <b>WaterShield</b>	-	48 (36)
LSWP74	1 layer of 13mm <b>FireShield</b>	-	48 (37)

Day Design 3094-22

Note:  
Pipes must not be in contact with insulation or plasterboard

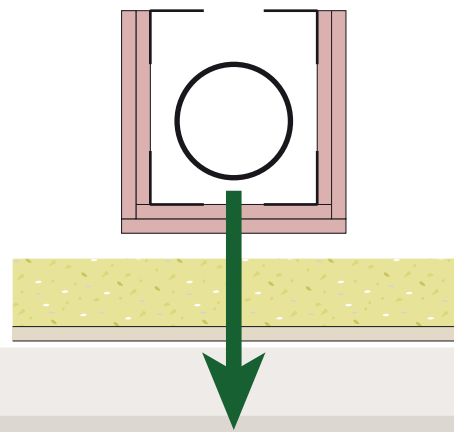
### LSWP83-LSWP95

PLASTERBOARD BOX ENCASING PIPE: 2 layers of 13mm **WaterShield**, **FireShield** or **SoundShield**

[Soil and waste pipe systems can be a ceiling, wall, bulkhead or duct with not less than 75mm gap between plasterboard box encasing pipe and outer plasterboard layers]

[Number of downlights per 5 m<sup>2</sup> area]

[Downlights should be evenly distributed and no closer than 900mm apart]



SYSTEM	PLASTERBOARD LINING	ACOUSTICS Rw (Rw + Ctr)	
		No insulation	With either 50mm Glasswool or 65mm Polyester ISB3
LSWP83	2 layers of 13mm <b>MastaShield</b>	-	49 (40) with 3 downlights
LSWP85	2 layers of 10mm <b>SpanShield</b>	-	49 (40) with 2 downlights
LSWP88	1 layer of 13mm <b>SoundShield</b>	-	-
LSWP91	2 layers of 10mm <b>WaterShield</b>	-	50 (40) with 3 downlights
LSWP95	2 layers of 13mm <b>FireShield</b>	-	47 (40) with 3 downlights

Day Design 3094-22

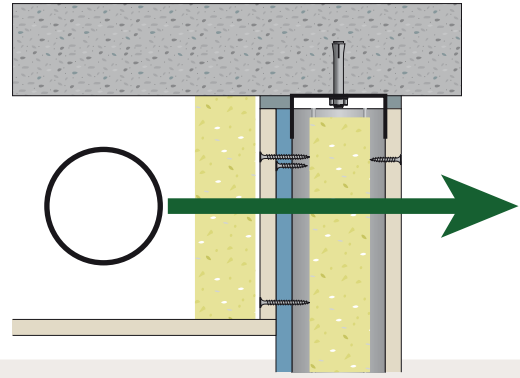
Note:  
Pipes must not be in contact with insulation or plasterboard

## LSWP100-LSWP114

INNER LINING: [HABITABLE ROOM SIDE] 1 layers of 10mm **MastaShield**  
 [BATHROOM ROOM SIDE] 1 layer of 10mm **WaterShield**

FRAME: 64mm minimum steel stud

WALL INSULATION: 50mm Glasswool or 65mm Polyester ISB3



SYSTEM	ADDITIONAL PLASTERBOARD STRIP ALONG WALL ABOVE CEILING ONLY	ACOUSTICS Rw (Rw + Ctr)	
		With no insulation along wall above ceiling	With either 50mm Glasswool or 65mm Polyester ISB3 along wall above ceiling only
LSWP100	1 layer of 10mm <b>MastaShield</b>	43 (34)	46 (36)
LSWP101	2 layers of 10mm <b>MastaShield</b>	47 (37)	50 (39)
LSWP102	1 layer of 13mm <b>MastaShield</b>	44 (35)	47 (37)
LSWP106	1 layer of 10mm <b>SoundShield</b>	44 (35)	47 (37)
LSWP108	1 layer of 13mm <b>SoundShield</b>	46 (37)	49 (39)
LSWP110	1 layer of 10mm <b>WaterShield</b>	44 (35)	47 (37)
LSWP111	2 layers of 10mm <b>WaterShield</b>	47 (38)	50 (40)
LSWP114	1 layer of 13mm <b>FireShield</b>	45 (36)	48 (38)

Day Design 3094-22  
 Note: Pipes must not be in contact with insulation or plasterboard

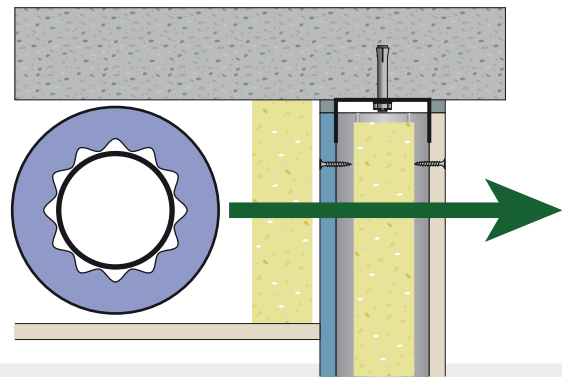
## LSWP120

PIPE WRAPPING: [OPTION1] CMG Latimer AFL/4-12 (4.5 kg/m<sup>2</sup>) or [OPTION2] Pyrotek Soundlagg 4525C (5 kg/m<sup>2</sup>) or [OPTION3] NuWave NuWrap5 (5 kg/m<sup>2</sup>)

INNER LINING: [HABITABLE ROOM SIDE] 1 layers of 10mm **MastaShield**  
 [BATHROOM ROOM SIDE] 1 layer of 10mm **WaterShield**

FRAME: 64mm minimum steel stud

WALL INSULATION: 50mm Glasswool or 65mm Polyester ISB3



SYSTEM	ACOUSTICS Rw (Rw + Ctr)	
	With no insulation along wall above ceiling	With either 50mm Glasswool or 65mm Polyester ISB3 along wall above ceiling only
LSWP120	57 (43)	59 (44)

Day Design 3094-22  
 Note: Pipes must not be in contact with insulation or plasterboard