

# FACT SHEET:

## AcoustiShield

Lafarge **AcoustiShield** is an innovative perforated plasterboard designed to provide superior sound absorption. It controls noise and echo especially in commercial buildings, and is also an excellent solution for the home in hallways and home theatres. In addition, AcoustiShield allows for design creativity as it is available in 3 distinct patterns.

### APPLICATIONS

This high performance product is ideal for meeting both noise reduction and quality design specifications in commercial buildings. With NRC up to 0.85 and a complete one-step installation, AcoustiShield is a cost-effective solution for achieving sound absorption specifications where the 'design' is as important as acoustic performance.

AcoustiShield Rectangular Pattern [L5\*80 no.8] has been installed in the newly refurbished Hilton Hotel, Sydney.



### BENEFITS

- ✦ SUPERIOR NOISE ABSORPTION SOLUTION
- ✦ REDUCES ECHO IN OPEN PLAN AREAS
- ✦ PROVIDES A MODERN AESTHETIC FINISH
- ✦ LOW COST SOLUTION

### FEATURES

- ✦ RECESSED EDGES CATER FOR A SMOOTH SURFACE
- ✦ PROTECTIVE MAT FIXED TO THE BACK OF THE PLASTERBOARD PREVENTS DUST EMISSION AND HELPS SOUND ABSORPTION

TECHNICAL ADVICE 1300 724 505 [lafargeplasterboard.com.au](http://lafargeplasterboard.com.au)



# FACT SHEET:

## AcoustiShield

### ACOUSTISHIELD RANGE

AcoustiShield is available in three unique perforated patterns:

- › AcoustiShield circular pattern [R15 no.8]
- › AcoustiShield rectangular pattern [L5\*80 no.8]
- › AcoustiShield square pattern [C10 no.8]

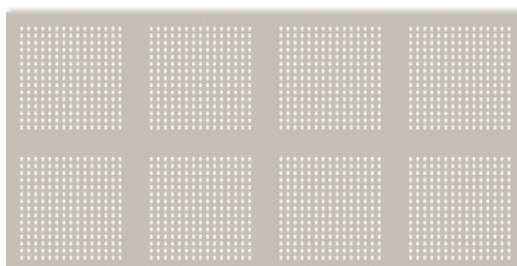
The AcoustiShield square [C10 no.8] pattern has been updated and improved with an increased rate of perforation resulting in a superior level of acoustic absorption performance. With the Noise Reduction Coefficient (NRC) of up to 0.85, AcoustiShield square pattern offers outstanding performance where both acoustics and aesthetics are required.

With a protective mat glued to the back of the board, installation is as simple as fixing standard plasterboard. AcoustiShield is available in 12.5mm x 1200mm x 2400mm sheet sizes, with 2 recessed edges and a weight of 10kg/m<sup>2</sup>.

### ACOUSTIC & TECHNICAL SPECIFICATION [R15 NO.8]

Rate of perforation	11%
NRC* (plenum 100mm)	up to 0.70
NRC* (plenum 300mm)	up to 0.65
Punch type and size	15mm diameter (15 x 15 circles)

\* Insulation – 80mm fibreglass 10.5kg/m<sup>3</sup>



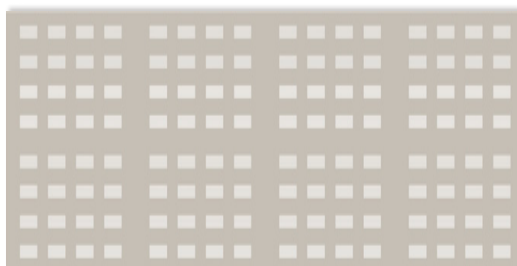
AcoustiShield circular pattern

[R15 NO.8]

### ACOUSTIC & TECHNICAL SPECIFICATION [L5\*80 NO.8]

Rate of perforation	10.6%
NRC# (plenum 100mm)	up to 0.75
NRC# (plenum 300mm)	up to 0.65
Punch type and size	5mm x 80mm (16 x 6 rectangles)

# Insulation – 80mm fibreglass 13kg/m<sup>3</sup>



AcoustiShield rectangular pattern

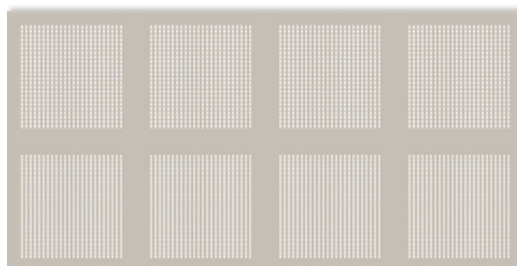
[L5\*80 NO.8]

### ACOUSTIC & TECHNICAL SPECIFICATION [C10 NO.8]

Rate of perforation	16%
NRC~ (plenum 100mm)	up to 0.85
NRC~ (plenum 300mm)	up to 0.70
Punch type and size	10mm x 10mm (24 x 24 squares)

~ Insulation – 80mm fibreglass 13kg/m<sup>3</sup>

Source: Lafarge Gypsum Division Technical Development Centre



AcoustiShield square pattern

[C10 NO.8]

TECHNICAL ADVICE 1300 724 505 [lafargeplasterboard.com.au](http://lafargeplasterboard.com.au)